

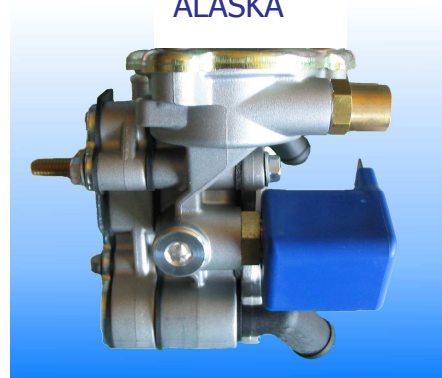
LPG REDUCER AT09

ECE 67R – 01

NORMAL



ALASKA

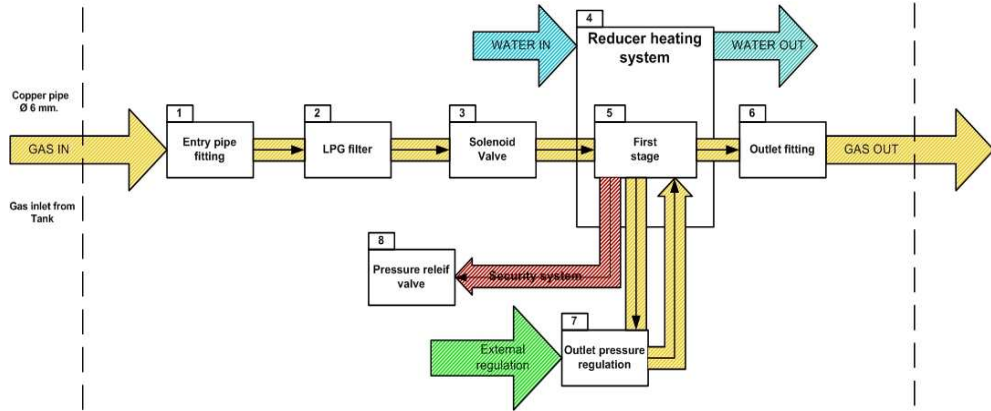


ARTIC

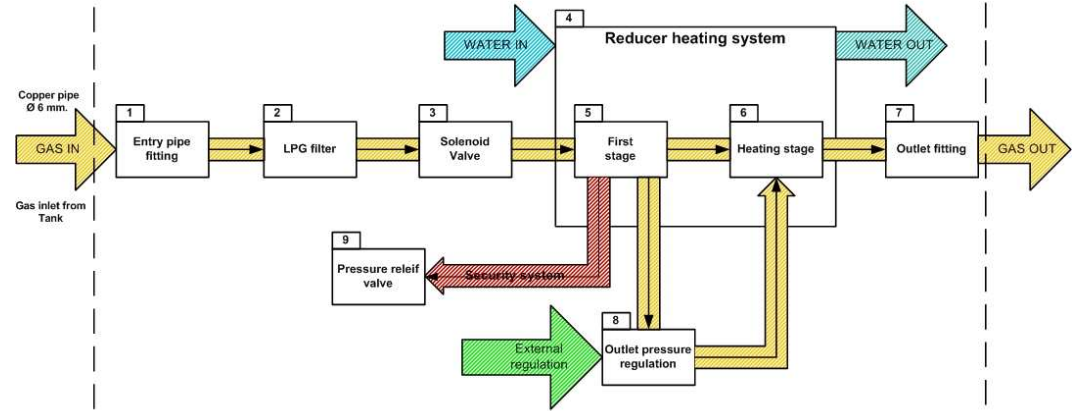


Tomasetto Achille Spa
Via del progresso, 47/53 – 36020 Castegnero (Vicenza) – Italia
Tel. +39 0444 638 326 Fax +39 0444 639 367
[www. Tomasetto.com](http://www.Tomasetto.com) – info@tomasetto.com

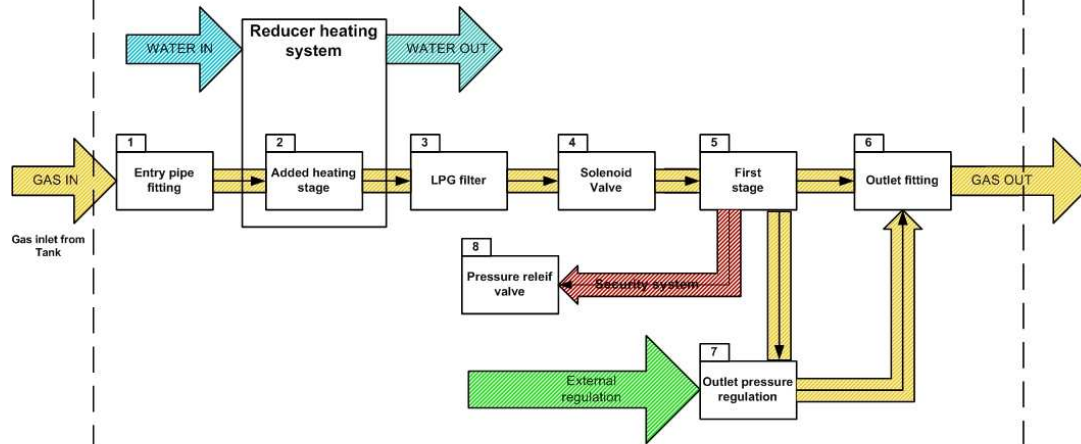
LPG REDUCER AT09 "NORMAL" TYPE



LPG REDUCER AT09 "ALASKA" TYPE



LPG REDUCER AT09 "ARTIC" TYPE



Technical description of components

Entry pipe fitting	Fitting for copper pipe carrying LPG from tank
Added heating stage (only for "ALASKA and "ARTIC")	The LPG is heated in order to obtain better engine performances
LPG Filter	Component used to clean the LPG coming from tank
Solenoid valve	Normally closed, has the function to intercept and stop the LPG flow when the engine is not running or powered by petrol.
Reducer 1° stage	Chamber that allow a reduction of pressure of the LPG
Outlet fitting	Fitting for copper pipe at the outlet of the reducer, to the engine.
Outlet pressure regulation	Allows a manual regulation of the outlet pressure in order to meet the requirement of the different automotive engines.
Pressure relief valve	Valve with a retaining spring that allows the relief of the LPG in vapour phase from the reducer, in case of overpressure.

Technical data	Normal	Alaska	Artic
Material	Die cast aluminium body, CNC machined	Die cast aluminium body, CNC machined, with aluminium added heating stage	Die cast aluminium body, CNC machined, with brass added heating stage
Weight	~ 1,20 kg (without accessories)	~ 1,50 kg (without accessories)	~ 1,80 kg (without accessories)
Max. inlet pressure	3 MPa		
Outlet pressure	Variable from 90 to 180) KPa (when tested non connected to the engine)		
Solenoid voltage	12 V dc		
Solenoid power dissipation	11 W	17 W	17 W
All other functional and environmental characteristic:	According to Regulation ECE 67R - 01		
Engine power	Suitable for limited power engine (up to 66 KW / 90HP) operating at ambient temperature not lower than 0°C.	Suitable for medium power engine (from 60KW to 100 KW / 90 to 136 HP) operating at ambient temperature not lower than -10°C.	Suitable for power engine (from 90 KW to 180 KW / 120 to 240 HP) operating at ambient temperature not lower than -25°C.
	Ambient temperatures lower than the indicated limit could reduce the efficiency of the LPG reducer and the performances of the engine. In case of operation at temperatures permanently higher than the indicated limit, the LPG reducer can be used on engines having power exceeding the range above indicated.		